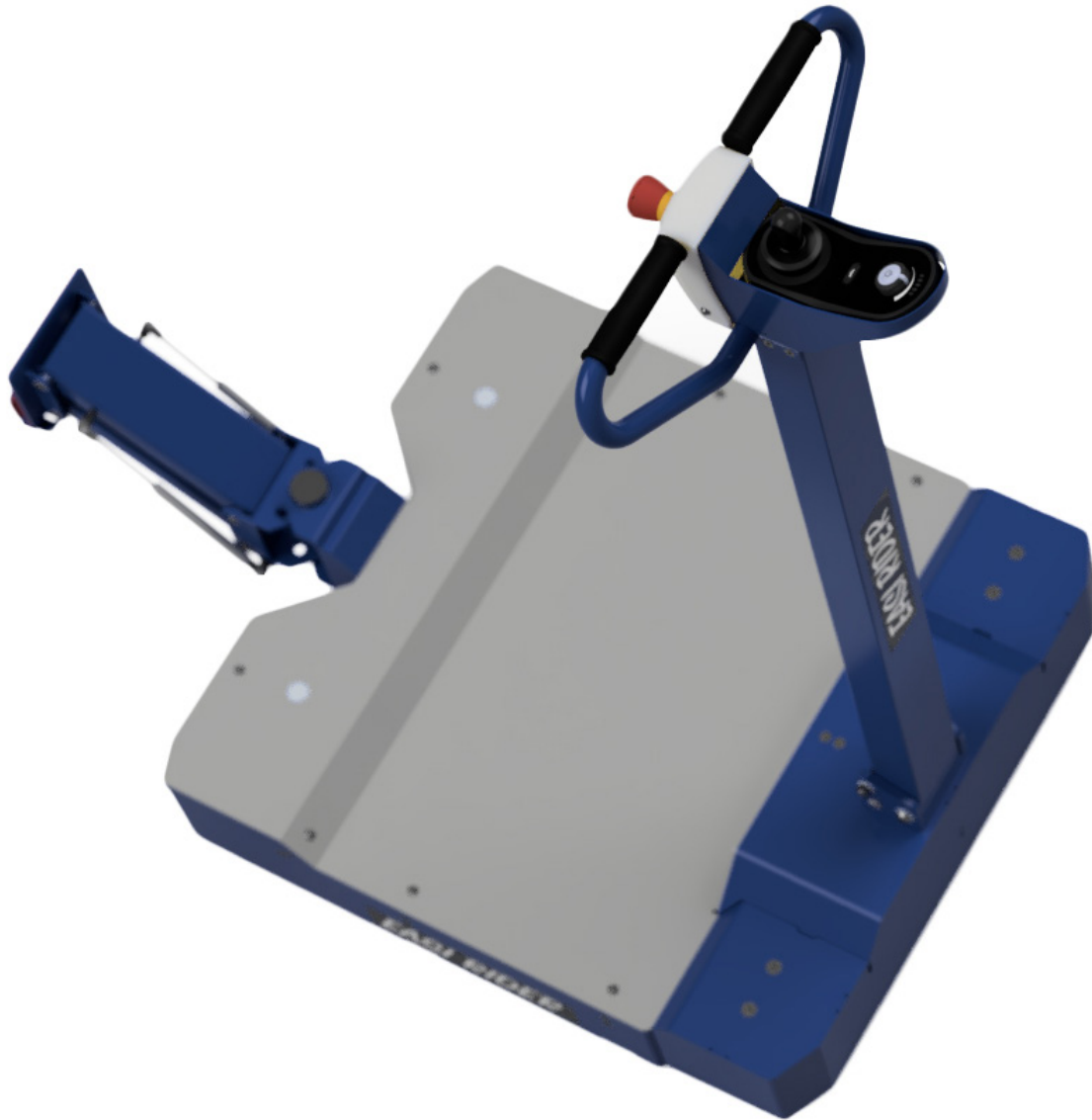




# COMPANY PROFILE



  
**RIHA Industries**

-  **RIHA Industries PTY LTD**  
U3, 59-61 West Avenue  
Edinburgh, SA 5111, Australia
-  [info@rihaindustries.com](mailto:info@rihaindustries.com)
-  [www.rihaindustries.com](http://www.rihaindustries.com)

## ABOUT US



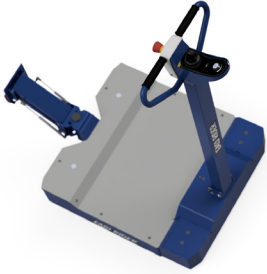
## ENGINEERING

The creation and commercialization of a new product is exciting as well as a complex process requiring diversity and depth of skills. At RIHA Industries we thrive on new challenges. Whether your project is small or large, we will tailor our services to suit your needs. RIHA Industries has the design capabilities, CAD software systems and technology to assist customers with complete component design, refinement and manufacturing. We have the experience, and resources to bring ideas into functional products. Our team can guide you through concept, development of component design, selection of material and finally tooling. Assessments can be made throughout the process to maintain cost effective options.

## ON SITE SERVICE

With over 10 years of experience, we know the importance of providing a tailored solution to each customer. The technicians at RIHA Industries understand the importance of adhering to the highest quality standards in every service call we undertake. Since our founding, we have focused on providing personalized quality service and professional repairs to the South Australian health industry. RIHA Industries is specialized in the repair of wheelchairs, trolleys, bed movers, chairs, commercial cleaning equipment and hospital beds. Our vans carry most common parts to reduce down time on machinery and equipment.

# PRODUCTS / PROJECTS



## EASI RIDER “RIDE ON” TUG

Designed, developed and manufactured by RIHA Industries. This robust and heavy-duty ride on tug offers exceptional maneuverability and towing capacity off up to 1500kg.



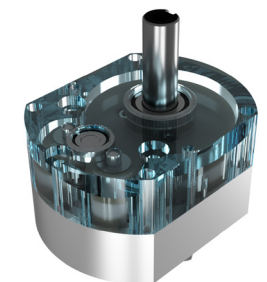
## OXYGEN BOTTLE TROLLEY

Developed and manufactured for the Royal Adelaide Hospital, this solution offered by us allows staff to transport 6 bottles at once while the existing trolley only carried 2. Overall, a more efficient, and ergonomic solution.



## OXYGEN BOTTLE BRACKET

Developed to suit hospital bed movers. Existing brackets were fixed to the equipment and had to be removed for service work. This caused a loss in time and often scratches on the mounting surface. The solution was a coupling system and a redesign of the bottle holder. The coupling system allows optional angle adjustment and the removal of the bracket without tools.



## GEARBOX

The purpose of this project was to develop a gearbox based on fixed parameters for a local customer. An existing design was unreliable and not fit for purpose. RIHA Industries redeveloped the gearbox, choosing different materials, dimensions and lubrication. With over 100 units manufactured, we have met the design requirements by reducing noise level and increasing reliability to 100%