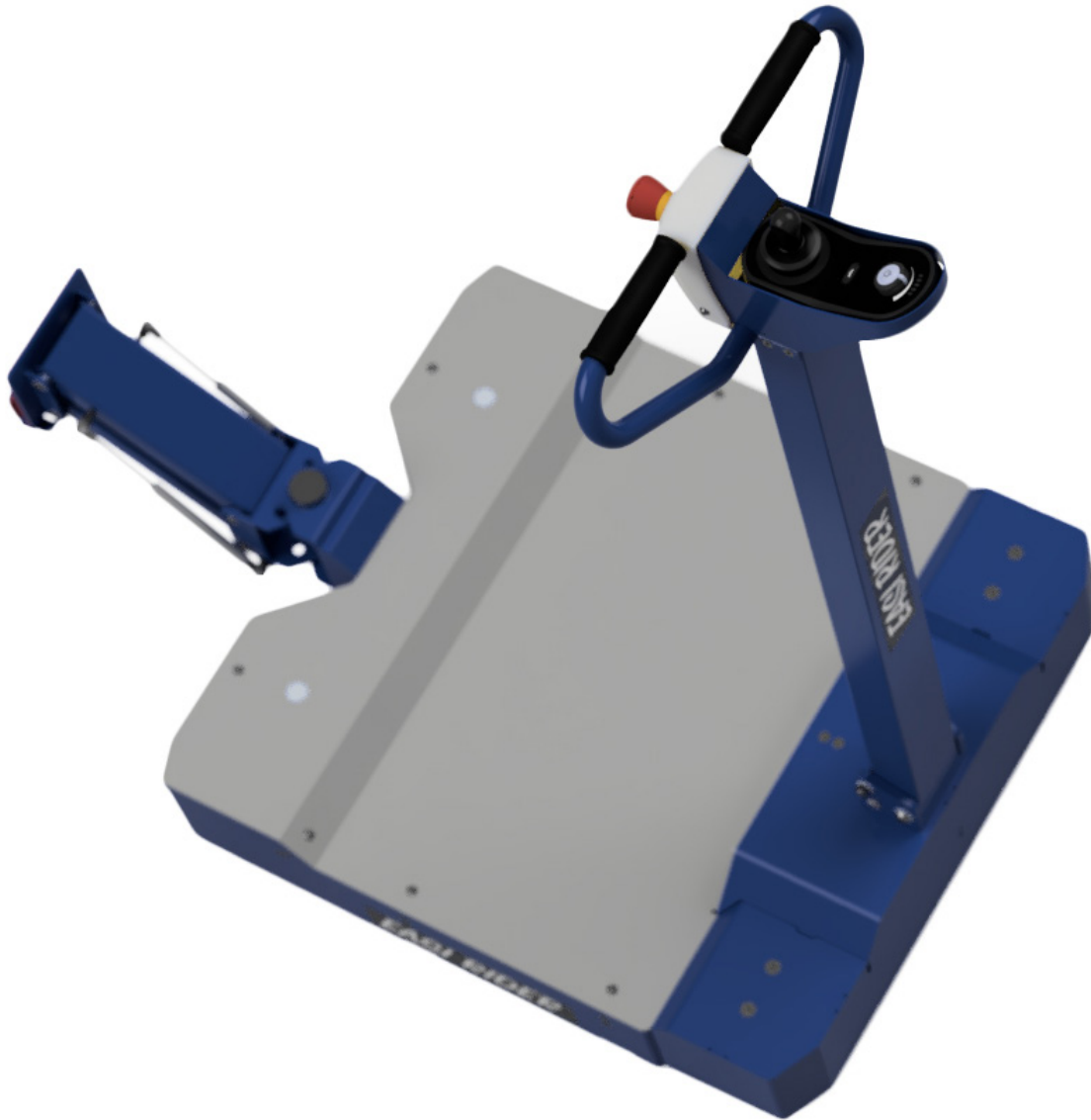



# PRODUCT BROCHURE



  
**RIHA Industries**

 **RIHA Industries PTY LTD**  
U3, 59-61 West Avenue  
Edinburgh, SA 5111, Australia

 [info@rihaindustries.com](mailto:info@rihaindustries.com)

 [www.rihaindustries.com](http://www.rihaindustries.com)



## ABOUT US

## ENGINEERING AND MANUFACTURING

At RIHA Industries we are focusing on solving manual handling challenges. Modern technologies such as 3D printers, CNC machines, CAD software and years of experience within the healthcare industry, help us to come up with unique solutions in a timely manner.

Over the last few years, we have developed several products and commercialised them in Australia and Europe. The creation and commercialisation of a new product is exciting as well as a complex process requiring diversity and depth of skills. At RIHA Industries we thrive on new challenges and believe in manufacturing locally. We have the experience, resources, and the will, to bring ideas into functional and practical products. We are a proud Australian Manufacturer.

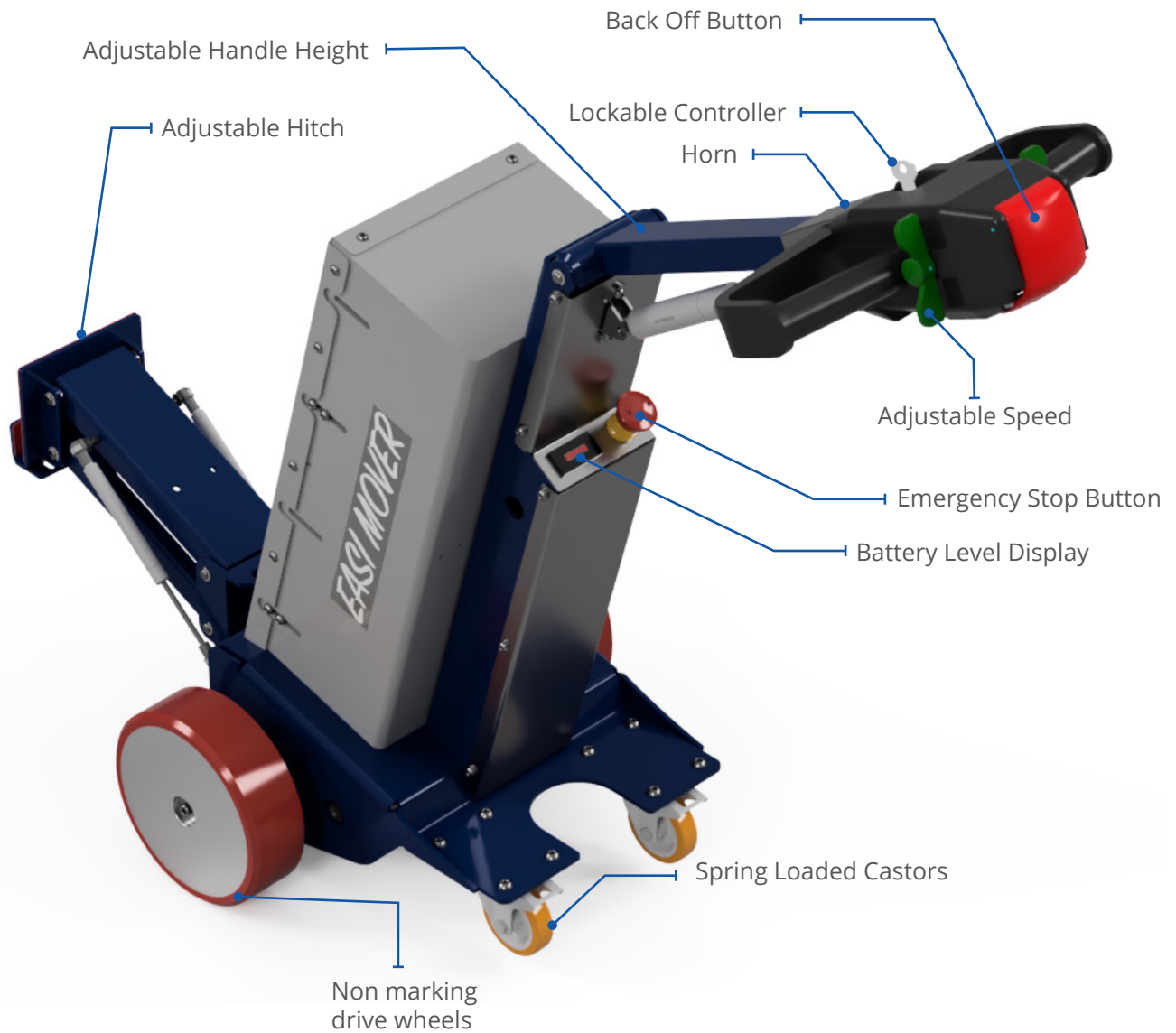
## EQUIPMENT REPAIR SERVICE

With over 10 years of experience, we know the importance of providing a tailored solution to each customer. The technicians at RIHA Industries understand the importance of adhering to the highest quality standards in every service call we undertake. Since our founding, we have focused on providing personalized quality service and professional repairs to the South Australian health industry. RIHA Industries is specialises in the repair of wheelchairs, trolleys, tugs, bed movers, hospital chairs, commercial cleaning equipment and hospital beds. Our vans carry most common parts to reduce down time on machinery and equipment.

# EASI MOVER



RIHA Industries

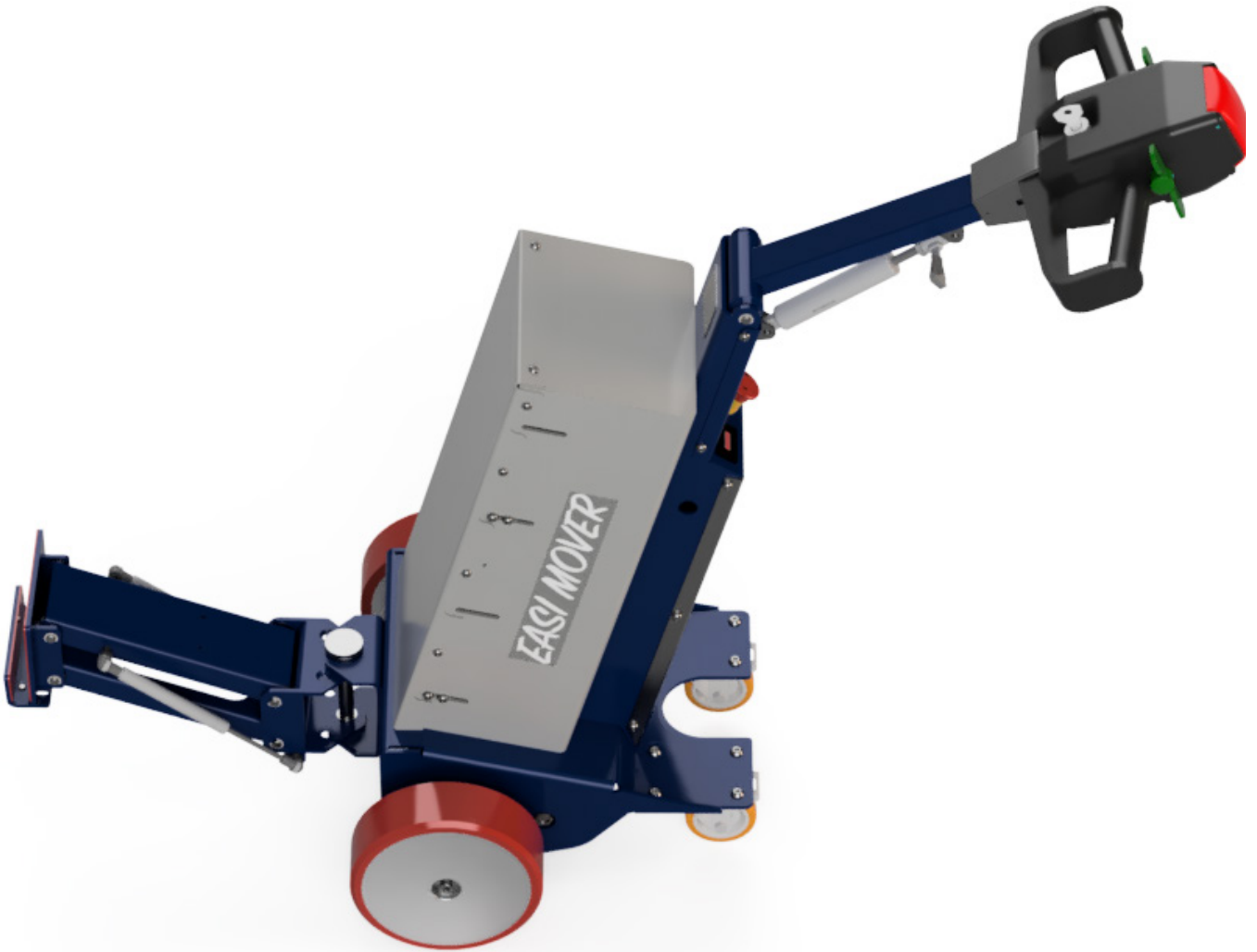


## ***BENEFITS***

- Easy to use
- Automatic braking
- Quiet operation
- Neat, robust and ergonomic design
- Rated for slopes and ramps
- Adjustable handle height

## SPECIFICATIONS

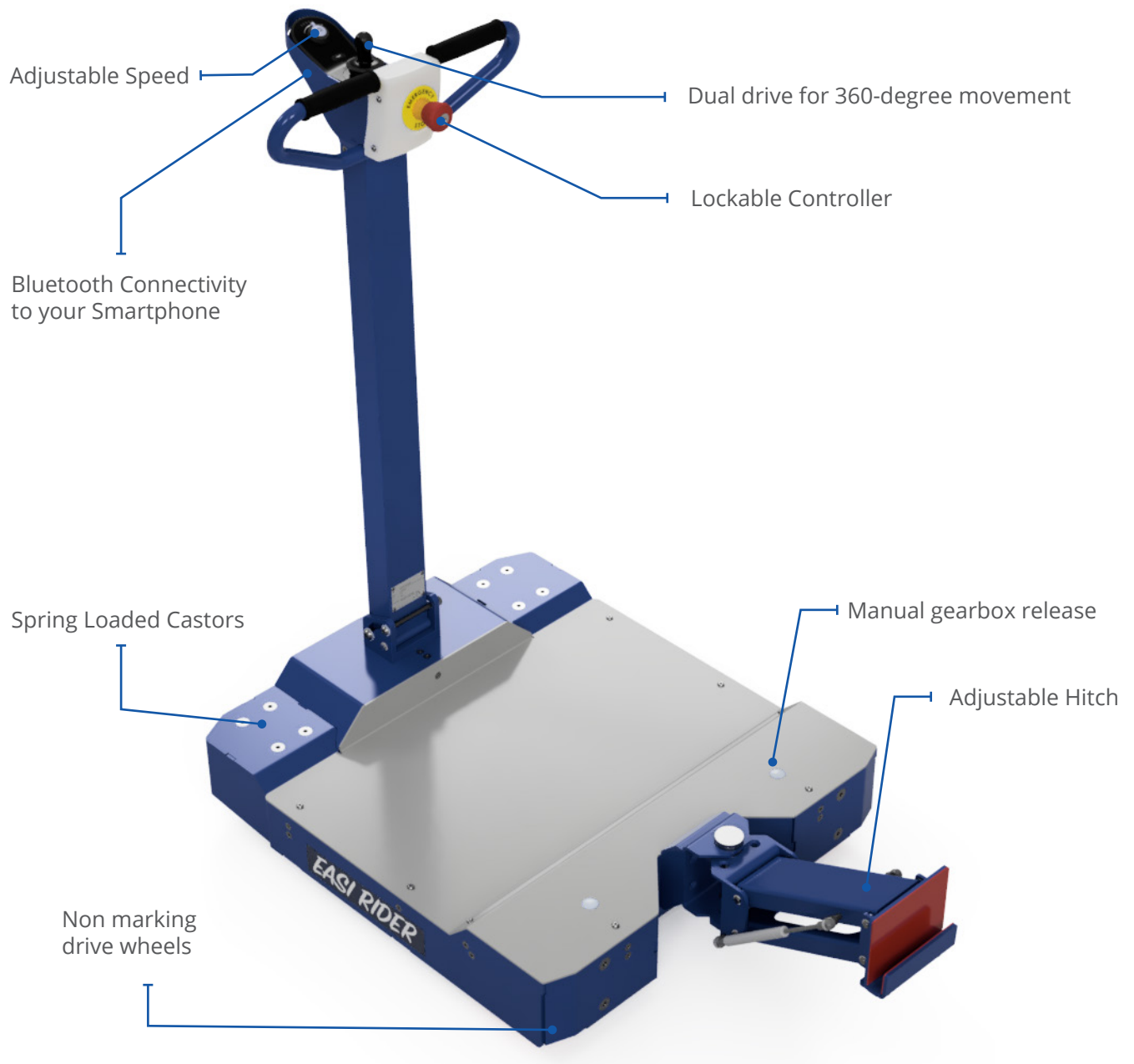
- **LENGTH:** 675mm
- **WIDTH:** 470mm
- **MAX HEIGHT:** 1175mm
- **MIN HEIGHT:** 800mm
- **PULLING CAPACITY:** 1500kg
- **SPEED:** 5km/h
- **POWER:** 24V DC motor with rechargeable batteries and LED indicator
- **CHARGE CYCLE:** Over night for 8 hours
- **OPERATION:** Tiller throttle controls forward and backward movement
- **SAFETY FEATURES:** Emergency stop, automatic brakes, horn, key lockout, back off button



# EASI RIDER



RIHA Industries



## ***BENEFITS***

- **Fingertip control, no muscular strain**
- **Automatic braking**
- **Quiet operation**
- **Neat and compact design to fit through standard doors**
- **Rated for slopes and ramps**
- **Increases efficiency and staff morale**



## SPECIFICATIONS

- **LENGTH:** 759mm
- **WIDTH:** 680mm
- **TOTAL HEIGHT:** 1160mm
- **PLATFORM HEIGHT:** 120mm
- **PULLING CAPACITY:** 1500kg
- **SPEED:** 5km/h
- **POWER:** 24V DC motors with rechargeable batteries and LED indicator
- **CHARGE CYCLE:** Over night for 8 hours
- **OPERATION:** Joystick controls movement of machine
- **SAFETY FEATURES:** Emergency stop, automatic brakes, horn, key lockout, lockable controller, Bluetooth Connectivity

# OXYGEN BOTTLE TROLLEYS



## SPECIFICATIONS

- **LENGTH:** 950mm
- **WIDTH:** 500mm
- **TOTAL HEIGHT:** 1035mm
- **WHEELS:** 125mm non marking polyurethane wheels, 2x fixed castors at front, 2x swivel castors at rear.
- **CAPACITY:** 15x size C oxygen bottles, 6x size D oxygen bottles
- **MATERIAL:** Heavy duty steel frame, powdercoated
- **SAFETY FEATURES:** Swivel castors with brakes





- ▶ U3, 59-61 West Avenue  
Edinburgh, SA 5111, Australia
- ▶ ABN: 30 643 058 986
- ▶ E: [info@rihaindustries.com](mailto:info@rihaindustries.com)
- ▶ W: [www.rihaindustries.com](http://www.rihaindustries.com)

